

# Self Priming Centrifugal Pump



Gasoline Engine Driven  
**Model 82D1-XR550-X**

Size 2" x 2"



Total Head		Capacity Of Pump In U.S. Gallons Per Minute (GPM) At Continuous Performance		
P.S.I.	Feet			
31.7	73	25	25	25
30.3	70	40	40	40
26.0	60	70	70	70
21.7	50	82	92	92
17.3	40	83	105	110
13.0	30	84	107	124
8.7	20	84	107	130
<b>Suction Lift</b>		<b>25'</b>	<b>20'</b>	<b>15'</b>



## PUMP SPECIFICATIONS

**Size:** 2" x 2" (51 mm x 51 mm) NPT - Female.

**Casing:** Aluminum Alloy 356-T6 w/Gray Iron 30 Cutwater Insert. Maximum Operating Pressure 50 psi (345 kPa).\*

**Semi-Open Type, Three Vane Impeller:** Aluminum Alloy 356-T6. Handles 5/8" (15,8 mm) Diameter Spherical Solids.

**Replaceable Wear Plate:** Carbon Steel ASTM A36.

**Intermediate Bracket:** Gray Iron 30.

**Seal:** Type 9, Mechanical, Self-Lubricated. PTFE Wedge. Silicon Carbon Stationary Face. Fluorocarbon Elastomers (DuPont Viton® or Equivalent). Maximum Temperature of Liquid Pumped, 160°F (71°C).\*

**Shaft Sleeve:** Stainless Steel 304.

**Flap Valve:** Nitrile Nylon Coated Fabric; Gray Iron 30.

**Flange:** Gray Iron 30.

**Gaskets:** Cork w/Nitrile Binder NC710.

**Hardware:** Standard Plated Steel.

**Standard Equipment:** Roll Cage w/Rubber Feet.  
90° Discharge Elbow.

**Optional Equipment:** Wheel Kit w/Semi-Pneumatic Tires.  
Strainer.

*\*Consult Factory for Applications Exceeding Maximum Pressure and/or Temperature Indicated.*



## WARNING!

This unit is designed to handle volatile, flammable liquids. To reduce the risk of fire or explosion, do not operate near open flames, sparks, cigarettes or any other ignition source. Do not operate the unit in an explosive atmosphere or unventilated area. Connect the attached ground cable to the nearest grounding point on the tank being filled. Shut off the engine and allow it to completely cool before refueling.

## ENGINE SPECIFICATIONS

**Model:** Briggs & Stratton XR550.

**Type:** Single Cylinder, Four Cycle, Air Cooled, Gasoline Engine.

**Displacement:** 7.75 Cu. In. (127 cc).

**Lubrication:** Splash System.

**Air Cleaner:** Dual Element, Semi Dry.

**Fuel Tank:** 2 U.S. Qts. (1,9 Liters).

**Full Load Operating Time:** 1.9 Hrs.

**Starter:** Rope Rewind.

**Standard Equipment:** Manual Start-Run Choke Control, Manual Throttle Control with Top Speed Limit. Spark Arresting Muffler and Heat Shield. Shielded Ignition. Grounding Wire.



GORMAN-RUPP PUMPS

www.grpumps.com

Specifications Subject to Change Without Notice

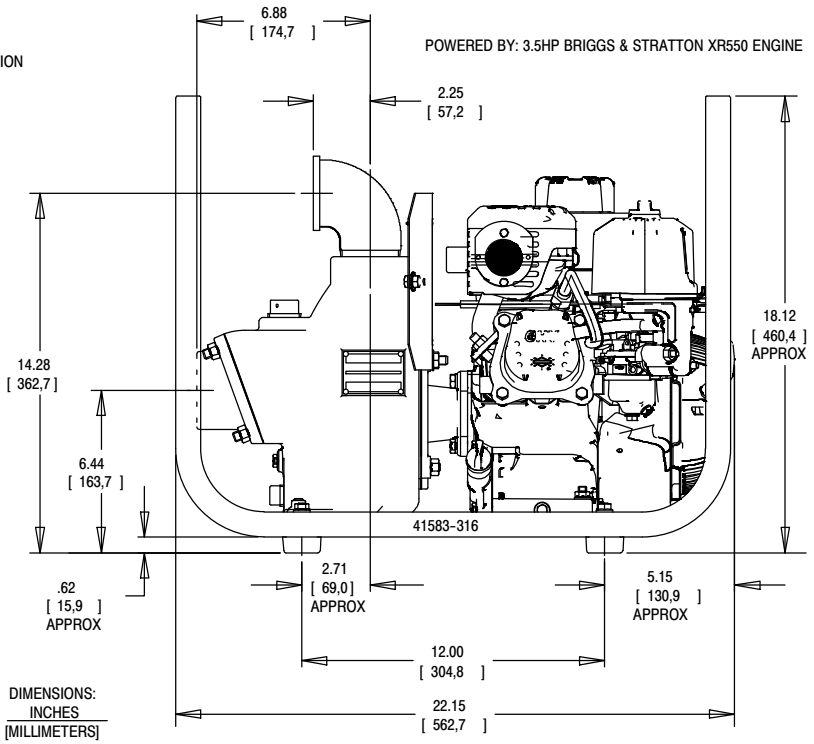
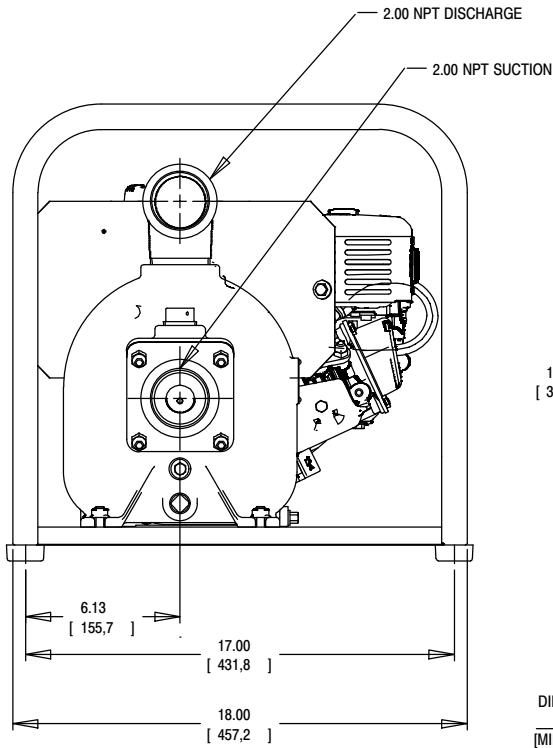
Printed in U.S.A.

**Specification Data**

SECTION 20, PAGE 185

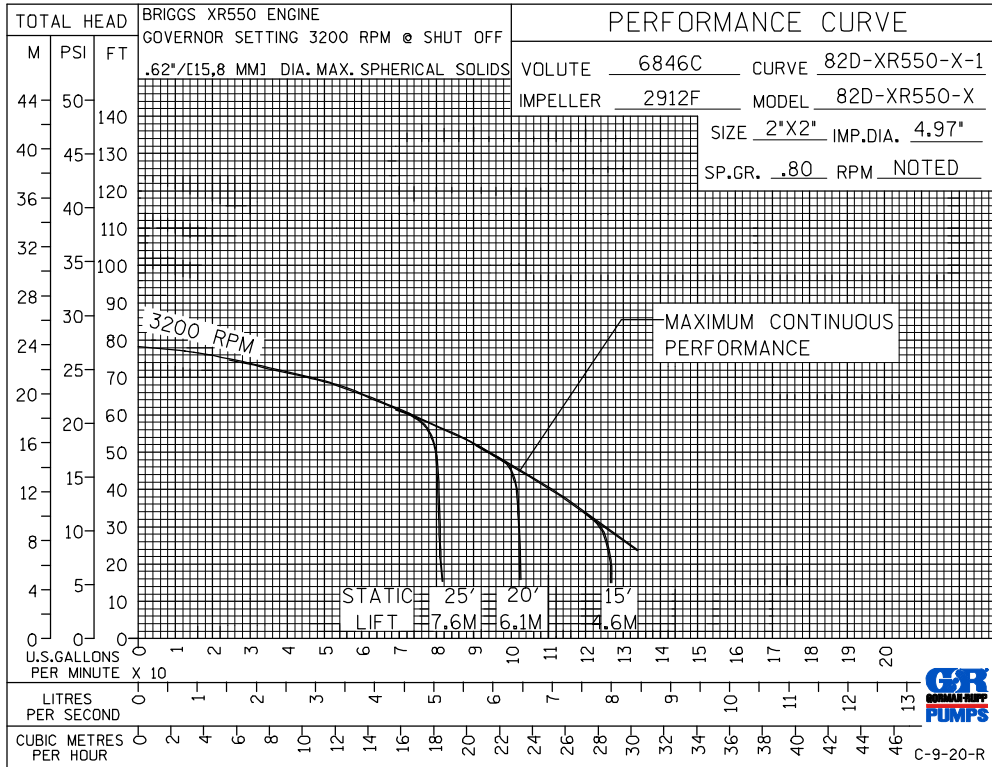
APPROXIMATE  
DIMENSIONS and  
WEIGHTS

	<b>SKID BASE</b>	<b>2-WHEEL</b>
<b>NET WEIGHT:</b>	73 LBS. (33 KG.)	95 LBS. (43 KG.)
<b>SHIPPING WEIGHT:</b>	76.5 LBS. (35 KG.)	100 LBS. (45 KG.)
<b>EXPORT CRATE SIZE:</b>	4.0 CU. FT. (0,11 CU. M.)	7 CU. FT. (0,20 CU. M.)



DIMENSIONS:  
INCHES  
[MILLIMETERS]

POWERED BY: 3.5HP BRIGGS & STRATTON XR550 ENGINE



**GORMAN-RUPP PUMPS**

www.grpumps.com

Specifications Subject to Change Without Notice

Printed in U.S.A.