



VARIOUS PATENTS APPLY

Priming Assisted Centrifugal Pump w/Autostart Model PAH4A65-6068H Size 6" x 4"



Total Head		Capacity of Pump in U.S. Gallons per Minute (GPM) at Continuous Performance			
P.S.I.	Feet				
128.3	296	400	400	N/A	N/A
121.4	280	560	560	N/A	N/A
104.0	240	1060	1280	320	320
86.7	200	1110	1370	1160	1200
69.4	160	1120	1400	1740	1880
52.0	120	1125	1415	1780	2040
34.7	80	1130	1425	1790	2060
17.3	40	1130	1430	1800	2060
Suction Lift		25'	20'	±15'	±10'

‡Suction Lift Based On 1800 RPM Engine Speed.

PUMP SPECIFICATIONS

Size: 6" x 4" (152 mm x 102 mm) Flanged.

Casing: Stainless Steel CD4MCu.

Maximum Operating Pressure 200 psi (1379 kPa).*

Enclosed Type, Two Vane Impeller: Stainless Steel CD4MCu.

Handles 3" (76,2 mm) Diameter Spherical Solids.

Suction Head: Stainless Steel CD4MCu.

Suction Spool: Stainless Steel CD4MCu.

Impeller Shaft: Stainless Steel 17-4 PH..

Externally Adjustable, Replaceable Wear Ring: Stainless Steel CD4MCu.

Bearing Pedestal: Gray Iron 30.

Seal Plate: Stainless Steel CD4MCu.

Seal: Mechanical, SAE 30 Non-Detergent Oil Lubricated. Silicon Carbide Rotating Face and Stationary Seat. Fluorocarbon Elastomers (DuPont Viton® or Equivalent). Stainless Steel 316 Cage and Stainless Steel 316 Spring. Maximum Temperature of Liquid Pumped 160°F (71°C).*

Shaft Sleeve: Stainless Steel 17-4 PH.

Priming Chamber: Stainless Steel 316 Housing w/Stainless Steel Float and Linkage.

Discharge Check Valve: Stainless Steel Housing w/Viton Flapper.

Radial Bearing: Open Roller.

Thrust Bearing: Open Double Ball.

Bearing Cavity Lubrication: Lithium EP2 Grease.

Gaskets: Fluorocarbon (DuPont Viton® or Equivalent), Compressed Synthetic Fibers and Buna-N.

O-Rings: Fluorocarbon (DuPont Viton® or Equivalent).

Hardware: Stainless Steel 316 and 17-4 PH.

Seal Cavity Oil Level Sight Gauges.

*Consult Factory for Applications Exceeding Maximum Pressure and/or Temperature Indicated.

Standard Equipment: Strainer. Gear-Driven Air Compressor. Hoisting Bail. Combination Skid Base w/Fuel Tank. **Single Ball Type Float Switch.****

**50 Ft. (15 m) Standard Length; Dual Switches and Alternate Cable Lengths Available From the Factory.

Optional Equipment: Battery. NPT Threaded Flange Kit. Suction Vacuum and Discharge Pressure Gauge Kit. High Speed (55 MPH/89 KM/H) Tandem Axle Pneumatic-Tired Wheel Kit w/v_o DOT Approved Lights and Electric Brakes. **Tandem Axle Over-the-Road Trailer. Full Feature Control Panel** For Use w/Submersible Transducer Liquid Level Sensor (50 Ft. [15 M] Cable Standard, Alternate Lengths Available).

**ENGINE SPECIFICATIONS**

Model: John Deere 6068H "Power Tech."

EPA Tier: Tier 3.

Type: Six Cylinder, Four Cycle, Turbocharged, Charge Air Cooled, Enclosed, Liquid Cooled Diesel Engine.

Displacement: 415 Cu. In. (6,8 liters).

Lubrication: Forced Circulation.

Air Cleaner: Dry Type.

Fuel Tank: 130 U.S. Gals. (492 liters).

Full Load Operating Time: 15.3 Hrs.

Starter: 12V Electric.

Standard Features: Muffler w/Weather Cap.

Optional: Electronic Fuel Level Sensor.

Engine Control Features: Padlockable Box with Throttle Control, Tachometer, Coolant Temperature, Oil Pressure, Voltage and Overstart Indicators/Shutdowns. Manual/Stop/Auto Keyswitch. Audible Startup Warning Delay. Fuel Level Display/Alarm/Shutdown (For Use With Optional Fuel Level Sensor).

JOHN DEERE PUBLISHED PERFORMANCE:

Maximum Gross BHP (Industrial Heavy Duty)
173 (168 kW) @ 2400 RPM



GORMAN-RUPP PUMPS

www.grpumps.com

Specifications Subject to Change Without Notice

Printed in U.S.A.

Specification Data

SECTION 43, PAGE 231

APPROXIMATE DIMENSIONS and WEIGHTS

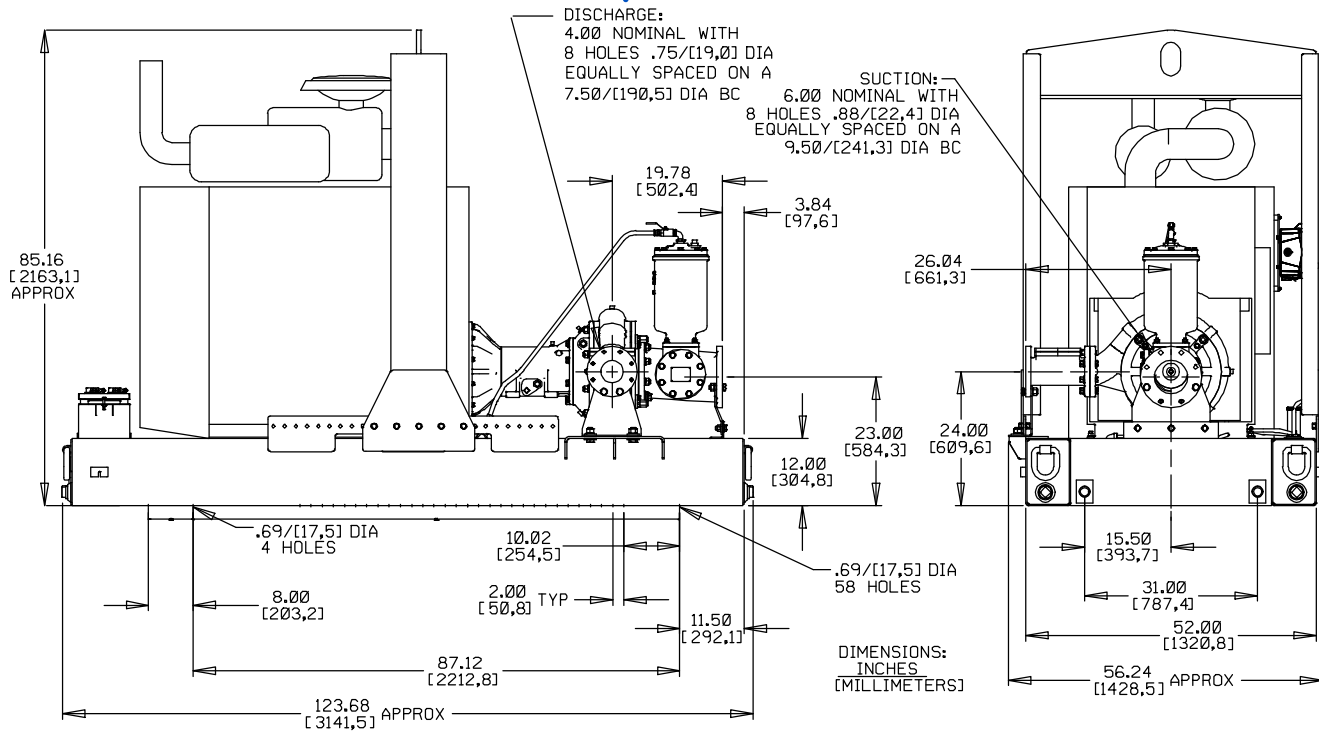
NET WEIGHT:
SHIPPING WEIGHT:
EXPORT CRATE SIZE:

SKID BASE

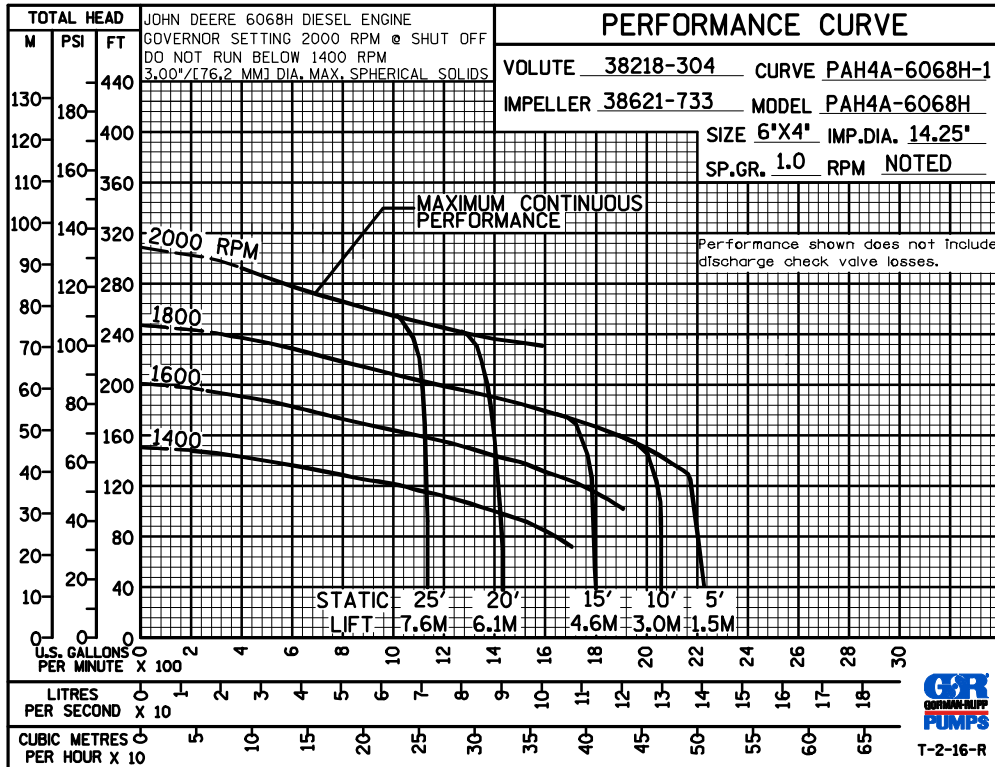
5040 LBS. (2286,1 KG.)
5250 LBS. (2381,4 KG.)
401 CU. FT. (11,4 CU. M.)

WHEEL KIT

5450 LBS. (2472,1 KG.)
5450 LBS. (2472,1 KG.)



POWERED BY TIER 3 JOHN DEERE 6068H DIESEL ENGINE



GORMAN-RUPP PUMPS

www.grpumps.com

Specifications Subject to Change Without Notice

Printed in U.S.A.